



104 woolcott Street EARLWOOD NSW

3 2 1

be impressed by this character enriched brick & sandstone family home positioned on a double fronted elevated block with district views. this sought after located family home offers:

- > 3 double bedrooms
- > 2 bathrooms
- > gourmet kitchen
- > stainless-steel appliances
- > leadlight windows
- > spacious lounge & dining
- > timber fireplace
- > tiled flooring
- > high ceilings
- > landscaped garden
- > garage with ample storage
- > set on 2 lots land area 379 m2

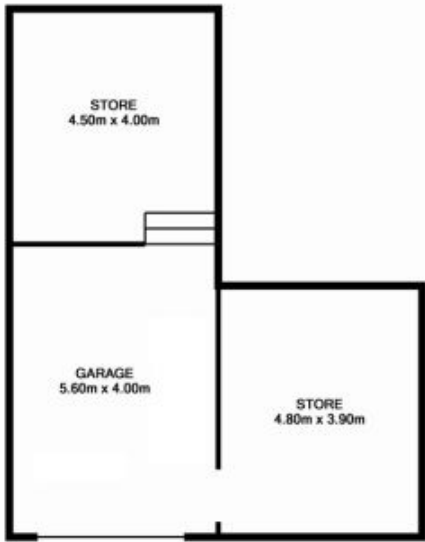
a much loved character filled home only a short stroll to

Land Size : 379 sqm

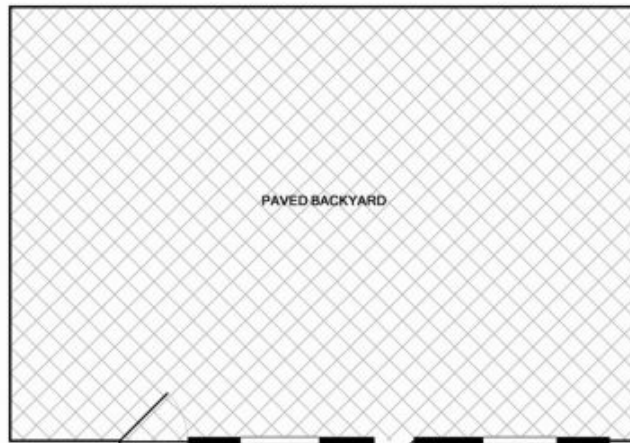
View : <https://www.unique-property.com/sale/nsw/inner-west/earlwood/residential/house/5883660>



Anthony Grasso
02 9743 3272



BASEMENT LEVEL
APPROX. FLOOR
AREA 99.1 SQ.M.
(636 SQ.FT.)



PAVED BACKYARD



GROUND FLOOR
APPROX. FLOOR
AREA 115.2 SQ.M.
(1240 SQ.FT.)

104 WOOLCOTT ST EARLWOOD

TOTAL APPROX. FLOOR AREA 174.3 SQ.M. (1876 SQ.FT.)
Measurements are approximate. Not to Scale. For illustrative purposes only.